

College of Coastal Georgia Foundation  
2010 Annual Report

*Coastal Georgia students (left to right) Colby O'Connor, Hayley Amick, David Gomes, Stephanie Peebles, and Lindsey Little take a break from classes to enjoy Driftwood Beach on the north end of Jekyll Island. Through a unique partnership with the Jekyll Island Authority, full-time Coastal Georgia students receive special passes as a benefit of their student activity fee. These passes provide unlimited access for one year to Jekyll Island – an exceptional venue for academic, athletic, and social programming.*



# Letter from the Chairman and President

The College of Coastal Georgia Foundation is a non-profit corporation governed by a volunteer Board of Trustees. The Foundation develops resources to support the College in providing quality education. The Foundation also serves as an advocate across Coastal Georgia communities to further the goals of the College. Programs supported by the Foundation include: Student Support and Scholarships, Capital and Technology Improvements, Academic and Instructional Support, and Engagement Activities such as the Minority Outreach Program, K-12 initiatives and more.

Dear Friends and Supporters,

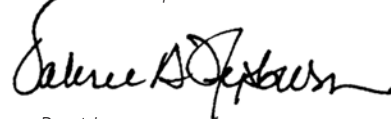
We are delighted to share the 2010 Annual Report of the College of Coastal Georgia Foundation. The publication is designed to showcase the synergies between our philanthropic efforts and the tremendous progress underway at the College of Coastal Georgia in partnership with students, faculty, staff, and community supporters. We hope our shared story will engage and excite you – as well as inspire you to join with us in transforming our communities through quality higher education in Coastal Georgia.

It has been another rapid-paced and record-setting year for the Foundation. We adopted our first Strategic Plan, designed to guide our fundraising and investment with primary focus on student support and quality academic programming and infrastructure. We have supported outstanding cultural events, cutting-edge student co-curricular activities and top-quality athletic programs. **The Foundation received contributions from a record 553 donors, and we raised an unparalleled \$1.46 million to support students in pursuit of educational excellence.**

Each gift and each milestone advance our margin of excellence as an institution of distinction and a college of choice for students locally and around the nation. The College of Coastal Georgia is thriving, even in the face of the most challenging of economic times, because forward-thinking individuals, community leaders, businesses, and foundations have been enthusiastic and generous supporters. Every contribution goes to support the mission and vision of the College and the success of our students and faculty.

Through the Foundation and at the College, each day brings new opportunities and new achievements. You are a valued partner in our progress, and we thank you for your support of our *Dreams in Action*.

Valerie A. Hepburn, Ph.D.



President  
College of Coastal Georgia

William F. Torrey, Jr.



Chairman  
College of Coastal Georgia Foundation, Inc.



# College of Coastal Georgia Foundation

## Implementing the Foundation's Three-Year Strategic Plan

To sustain the College's growth, vision and mission, the Foundation developed an aggressive three-year strategic plan in 2010 to expand the donor base and increase giving. These targets not only reinforce the academic mission of the College, but also identify quantitative and qualitative benchmarks by which success can be measured.

### Key investment targets for the coming year have been identified:

- Student Housing and Capital Expansion – Secure at least \$500,000 annually in unrestricted revenue to support capital construction and renovation. Aggressively seek naming opportunities to increase restricted capital donations targeted for building and infrastructure.
- Student Scholarships – Award full or partial scholarships to at least five percent of total student enrollment.
- Faculty Development and Endowments – Target at least one new named faculty position annually and commit at least \$50,000 in support for faculty programs.
- Athletic Programming and Facilities – Raise sufficient funds to ensure at least ten percent of giving is allocated to athletics through a combination of scholarships, facilities and program support.
- Campus Programming and Student Life – Target ten percent of annual giving for campus programming and student life, providing a range of innovative artistic and cultural programs, signature student events, and meaningful career and entrepreneurship immersion experiences.

### To achieve these targets, implementation strategies include:

- Expand the donor base by increasing the number of donors by twenty percent annually and adding givers beyond the immediate region, involving fifty percent of Coastal Georgia businesses in giving at some level, and securing at least two additional gifts from philanthropic foundations annually.
- Establish an alumni association to support regular giving and College programming.
- Reaffirm the core mission of Trustees as fundraisers for the College and provide resources to recruit, develop leadership, train and transition Trustees who exemplify best practices for governance of charitable organizations.
- Utilize social media in addition to traditional media to effectively communicate with, and engage, current and future alumni as well as the public at large.
- Develop more diversified giving options through charitable remainder trusts, estate planning and enrolled corporate giving.
- Celebrate the 50th anniversary of College founding with a series of signature events to cultivate new donors, engage alumni and galvanize public support.

### Foundation Executive Board

**William F. Torrey, Jr., Chairman**  
Retired, Canal Chip Corporation

**Rees M. Sumerford, Vice-Chairman**  
Managing Partner, Gilbert, Harrell,  
Sumerford & Martin, PC

**Susan Shipman, Secretary**  
Retired, Coastal Resource Division,  
Georgia DNR

**Wayne Johnson, Treasurer**  
President and CEO,  
The Coastal Bank of Georgia

**Pat Hodnett Cooper, At-Large**  
President/Broker,  
Hodnett Cooper Real Estate

**David Zimmerman, At-Large**  
Retired, Lear Corporation

**Ron Maulden, Immediate Past Chairman**  
Vice President and General Manager,  
The Brunswick News

### Ex Officio:

**Regent James A. Bishop, Esq.**  
The Bishop Law Firm

**Dr. Valerie A. Hepburn**  
President, College of Coastal Georgia

**C. Tom Saunders**  
Vice President of Business Affairs,  
College of Coastal Georgia



## 2010 Trustees

**Levi Baisden**  
President and CEO,  
Baisden Foundation

**Mel Baxter**  
Chairman and CEO,  
United Community Bank, Inc.

**David Bluestein**  
Retired, Bluestein Supermarket

**Gary Colberg**  
President and CEO,  
Southeast Georgia Health System

**Fred Coolidge**  
Retired, First Georgia Bank

**Laverne Cooper**  
Retired,  
College of Coastal Georgia

**Emily Davenport**  
Owner, Coastal Nurse Care, Inc.

**Melvin Deese, Jr.**  
Orthopaedic/Ankle and Foot  
Surgeon, Summit Sports  
Medicine & Orthopaedic Surgery

**Jack Dinos**  
Retired, Southern Tea Company

**Bruce Dixon**  
President,  
The Dixon Management Group, Inc.

**Marie Dodd**  
Community Leader

**J. Ashley Dukes**  
President,  
Dukes Drugs, Inc

**Ken Farrell**  
President, First Glynn Bank

**Bill Gross**  
President and Owner,  
William Gross Construction

**Duane Harris**  
Owner,  
Sea Georgia Adventures

**Ben Hartman**  
Attorney and Partner,  
Gilbert, Harrell, Sumerford &  
Martin, PC

**Mike Hodges**  
President,  
Ameris Bank

**Con Holland**  
Chairman/President and CEO,  
Southeastern Banking Corporation

**Michael B. Johnson**  
Vice President of Operations,  
King & Prince Beach & Golf Resort

**Jack C. Kilgore**  
President, Consumer Brands  
Division, Rich Products  
Corporation

**Cheri Leavy**  
Editorial/Advertising Director,  
Bulldawg Illustrated

**Ben Lee**  
Certified Public Accountant

**Rebecca Lott**  
Vice President of Marketing,  
Acree Oil Company

**Laura Cross McKinley**  
Community Leader

**Al McKinnon**  
President, South Coast Bank & Trust

**Randal Morris**  
Public Affairs Manager,  
GP Cellulose

**Diana Murphy**  
Managing Director,  
Private Equity/Rocksolid  
Holdings, LLC

**Donald Myers**  
Retired, Fund-raising Consultant

**Brian Parks**  
President and CEO,  
Suntrust Bank, Southeast

**Connie Patrick**  
Director, Federal Law  
Enforcement  
Training Center

**Kathleen Williamson Russell**  
President, Editor and Publisher,  
The Darien News

**Diane Sapp**  
Co-owner, Woodrow Sapp Water  
Management

**David Smith**  
Self-employed,  
Brunswick-Glynn County  
Development Authority

**Tricia Smith**  
Past President, Board of  
Directors, United Way of  
Camden County

**Willou Smith**  
Former Legislator and Former  
Member,  
State Board of Education

**Anita Timmons**  
Partner, Taj Enterprises

**Merry Tipton**  
Director of Corporate  
Communications,  
Sea Island Company

**Lance Turpin**  
City Executive, BB&T Bank

## About the College of Coastal Georgia

Located on Georgia's coast midpoint between Savannah and Jacksonville, the College is the newest four-year baccalaureate school in the University System of Georgia. The College provides an exemplary, affordable baccalaureate education in the natural beauty of coastal Georgia. 2011 marks the 50th anniversary of the College chartering, originally as a two-year junior college.

The College stresses experiential and service-learning with Bachelor's degrees currently offered in biological sciences, health informatics, business, nursing, and teacher education. The College has embarked on a strategic master plan that includes additional baccalaureate degrees, redesigned and enlarged academic facilities, expanded athletic programs, and construction of on-campus student housing. The objective is to foster a vibrant, attractive campus community excelling in extra-curricular and co-curricular learning that will advance students' personal development and professional experience.

The campus community is part of the larger community of southeast Georgia. The College is committed to serving as an instrument of community engagement and a resource for economic and cultural development. Partnerships exist with institutions such as the Southeast Georgia Health System, the Federal Law Enforcement Training Center, the Southeast Georgia Joint Development Authorities, the Camden County Joint Development Authority, the Brunswick-Glynn County Archway Partnership, the Glynn County School System, the Jekyll Island Authority, and a wide range of community service and arts organizations.

With a current enrollment of more than 3,400 students, the College of Coastal Georgia is developing lasting recognition as a respected destination for outstanding undergraduate education and as an invaluable community resource.



## OUR VISION

The College of Coastal Georgia will be a college of choice for students within Georgia and beyond, providing an outstanding education for tomorrow's leaders and citizens through service learning, global awareness, and engaged entrepreneurship.

*The Health and Science Building was one of five major construction projects on campus during 2010. Also completed were a pedestrian mall and varsity tennis courts. Student housing and a campus center are scheduled to open in summer 2011.*





HEALTH & SCIENCE BUILDING

Miriam and Hugh Nunnally  
Center for Nursing Education



*Nursing faculty members  
are committed to exemplary  
health care education as participants in the  
Miriam and Hugh Nunnally Center for Nursing Education,  
which was established at year end in 2010.*

*"Since I was six months old I've been coming to this coast. I remember driving by the College as a teenager, thinking how much fun it would be to go to school there and live at the beach, but my parents had other ideas. I love this area and I want to actively support the great things that are happening at the College."*

*William J. Stembler  
Chairman and CEO,  
Georgia Theatre Company  
Chair, Campus Center  
Planning Committee*

*"We want to help prepare pharmacy students to be leaders in keeping the profession of community pharmacy strong for future generations. This will provide support for aspiring pharmacists at an earlier point of education. Jill, who is an alumna, and I are excited about the dynamic transformation of the College. As area residents with local business concerns, we recognize and value the tremendous asset the College has become for southeast Georgia."*

*J. Ashley Dukes  
President, Dukes Drugs, Inc.  
Foundation Trustee*

## 2010 Foundation Donor Highlights

### Miriam and Hugh Nunnally Center for Nursing

A \$1 million restricted commitment by Hugh Nunnally in honor of his wife, Miriam, will support capital projects and programming to benefit nursing students and nursing education. Previously, the Miriam and Hugh Nunnally Maternity Care Center had been dedicated at the Southeast Georgia Health System, a key partner with the College of Coastal Georgia. Recognizing the need for deeply-engaged, highly-skilled nurses to support delivery of top-quality maternity care and other health care, Mr. Nunnally made a parallel investment in the College. This gift represents a margin of excellence in capital, infrastructure and support for nursing education.

In a recent site visit by the National League for Nursing Accrediting Commission, the facilities and community support for the program were noted as exemplary. The site team was particularly impressed by the support reflected through the Southeast



*Jack and Mary Dinos with Dinos Scholarship recipient Christian Liggin, golf coach Mike Cook and Dinos Scholarship recipient Dylan Freeman.*

Georgia Health System Distinguished Dean of Nursing and Health Science and the Miriam and Hugh Nunnally Center for Nursing Education. The Center will be dedicated in March 2011.

### Mary and Jack Dinos Golf Scholarship

The Mary and Jack Dinos Golf Scholarship Endowment of \$100,000 allows the College to annually award tuition scholarships to two outstanding student golfers, one male and one female, beginning fall 2010. The

inaugural recipients are Christian Liggin of Smithville, the two-time Region 1 AAAA Champion and two-time player on the girls All-State team, and Dylan Freeman of Athens, the 2010 Region 8 AAA Champion, Player of the Year, and member of the 2010 boys All-State team.

Athletic scholarships are important as the College begins to add new athletic programs, a key part of our future mission. Improved services for students and athletic programs which foster individual development and enrich student lives are just a few of the initiatives launched in 2010.

### Kathrine Jenkins and John H. Stembler Theatre

William J. Stembler chose a special way to honor his parents in the community which serves as headquarters for the Georgia Theatre Company, a third-generation, family-owned business. His pledge of \$100,000 will benefit the equipping, operating and sustaining of the new Campus Center theatre and related student activities.

## 2010 Foundation Highlights (continued)

The Company and the Stembler family have been ardent supporters of programs advancing the arts and education, and improving the lives of young people, for over 85 years. Mr. Stembler's volunteer efforts, in conjunction with this gift, will assure quality programming and theatre experiences for our students across the next decade or longer.

### Davis Laboratory

With a \$50,000 gift to commemorate the life and work of her husband, Dr. Byron Scott Davis, founder of Doctors Laboratory, Mrs. Margaret H. Davis established the Davis Medical Sciences Laboratory in the new Health and Science Building. Dr. Keith Belcher, Dean of the School of Mathematics and Natural Sciences, describes laboratory scientists as the hidden detectives in the medical field. Her gift will benefit future medical laboratory scientists and patients for generations to come, expanding the program and resources available to our students.

### J. Ashley and Jill R. Dukes Scholarship for Pre-Pharmacy Students

This \$25,000 endowment established by Ashley and Jill Dukes will fund an annual scholarship, to be awarded competitively by application, for a second- and/or third-year undergraduate student successfully matriculating towards transfer into a Doctor of Pharmacy program. The Dukes have previously endowed an educational scholarship at the University of Georgia College of Pharmacy.

### Grant Establishes Center for Service-Learning

The St. Marys United Methodist Church Foundation awarded the College Foundation a \$150,000 grant (\$75,000 annually for two years, beginning July 2010) to fund a Center for Service-Learning. Service-learning is a credit-bearing experience in which students participate in organized service experiences that respond to a wide spectrum of community needs. Through structured reflection on their service activities, students gain a deeper understanding of course content, develop skills in community leadership, and advance their appreciation of social responsibility, global awareness, and diversity. Service-learning allows students to practically apply and test their academic learning through hands-on opportunities that also promote community interests. Dr. Clayton Hurd was appointed program director. Arriving on campus in September, his first objectives were to connect with faculty and student organizations and to cultivate partnerships within the community. These partnerships serve as expanded classrooms for experiential learning, teaching real-life skills through real-life situations, and helping community partners, including:

- Boys and Girls Club of Southeast Georgia
- Second Harvest Food Bank
- Humane Society of South Coastal Georgia
- Habitat for Humanity of Glynn County

As the Center for Service-Learning quickly develops beyond strategic master plan concept to community engagement, the goal is to expand service-learning into the co-curricular realm with the support and leadership of students and student organizations.

*"With substantial partnership building and faculty preparation accomplished in 2010, we expect to have hundreds of our students serving in the community as part of their academic coursework in the upcoming year. Ongoing training and monitoring of our partnership relations will be key in 2011 as we continue to enhance teaching and learning, which in turn will transform the way the College interacts with the community."*

*Clayton A. Hurd, Ph.D.  
Director,  
Center for Service-Learning  
Assistant Professor of  
Anthropology*



*Dr. Kim Pause Tucker, St. Marys United Methodist Church Foundation Executive Director Jeff Barker, Dr. Leo Mundy, Dr. Clayton Hurd, and Fort Frederica National Monument Superintendent Mary Beth Wester.*

## Scholarship Awards and Programs

With the College's growth comes additional needs for student support and scholarships. Scholarships allow the College to recruit the best and brightest from across Georgia. The Foundation awarded 170 scholarships to students totaling \$220,850. The Foundation has more than 40 types of scholarships available and \$400,000 to offer for the 2011-2012 academic year. With decreasing state support and increasing student costs and changes to the HOPE Scholarship, the need for additional support is on the rise. With the help of generous contributors, the Foundation has established the Building Our Academic Talent (BOAT) scholarship to provide financial assistance for high-achieving students who will become academic leaders on campus. The Student Academic Incentive Link (SAIL) Grant is awarded to students who demonstrate promise but who are not HOPE Scholarship eligible. Initial outcomes indicate retention rates are significantly higher for students who receive scholarship support.

A number of community members have stepped forward to help build the College by establishing scholarships, awards, and programs. Without support such as theirs, the expansion of the College as a four-year baccalaureate degree-granting institution would not be possible.

*"Being a Foundation Scholarship recipient enables me to devote more time to my academic studies. As an international student, I am not eligible for financial aid. Without the Foundation scholarships, financing my education would have been difficult. I appreciate this great Coastal Georgia community for their support and determination to help students achieve their educational goals. This support inspires my community service."*

*Jessin Oueslati,  
Freiburg, Germany  
President, Business Student Society  
Senior, Business Administration - 3.81 GPA*



*"The scholarships the Foundation provides are very valuable to students. Thanks to their assistance, I was able to take more classes and really concentrate on my studies. Without the scholarships, I would have been working more than studying."*

*Hilary Pulos  
Jesup, Georgia  
Sophomore, Modern Foreign Languages - 4.0 GPA*





## Coastal Georgia Faculty and Staff give back to the College

**F**aculty and staff contributed over \$22,000 to the 2010 annual giving campaign. These gifts were used to support their respective departments and student scholarships, as well as faculty and staff development programs.

Not only have faculty and staff members personally demonstrated campus leadership by investing in the College's future, but collectively they have committed to incorporating student service-learning as the core objective of their Quality Enhancement Plan.

*"I contribute to the Foundation not only for the scholarship benefits reaching so many students, but also for the significant role the Foundation plays in expanding the physical facilities and infrastructure required for this rapidly-growing four-year college."*

*Greg Carver, P.E.  
Assistant Vice President for  
Design and Construction*

*"I moved to coastal Georgia in 1981, began teaching biology as a part-time instructor in 1987, and have just completed twenty years as a full-time professor. I've always thought of the College as an oasis of learning, providing cultural enrichment for the faculty and the community as well as the students. This is important to me, personally. I give because I value the College. Through the Foundation, my gift translates into a broader, more fruitful learning experience for the students."*

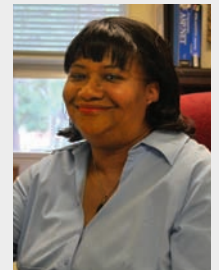
*Patricia Rugaber,  
Associate Professor of Biology*



*"When I was a student here, giving back to the community and to the school was part of our culture. That sense of gratitude, of personal responsibility, carried through into my life. More than thirty years ago, the College offered me a job in my chosen field."*

*The College not only provided me the opportunity to advance my education, but also to positively impact students' success through technology. I give because the College has given so much to me."*

*Gerri Chapman Culbreath, '77  
Chief Information Officer*



# College of Coastal Georgia Foundation

## Executing the Vision

The Foundation Strategic Plan for 2010-2012 was specifically developed to support the College master plan, *2020 Vision*. The Foundation vision touches academic programs, student life and student services programs, community engagement and economic development, as well as traditional concerns with scholarships, infrastructure and construction.



During 2010, the College surpassed a student enrollment target of 3,000 to reach a head count of more than 3,400 academic degree students.

Beyond business, education and nursing, additional degrees were approved in 2010 which target regional and national economic needs:

- Bachelor of Science in Health Informatics
- Bachelor of Science in Biological Sciences
  - Biology Education
  - Coastal Ecology
  - Pre-professional
- Associate of Applied Science
  - Culinary Arts
  - Hotel Operations

Continued growth and program expansion requires on-campus student housing and additional academic facilities. The commitment to new academic programs requires an equal commitment to recruit, develop and retain quality faculty. As public funding is reduced, private funding and endowments

become increasingly vital to faculty experiencing increased performance demands and students experiencing diminished public scholarship options.

Scholarships and academic incentives will be critical in recruiting and retaining outstanding students who will become outstanding alumni and future community leaders. Athletics, co- and extra-curricular programs are integral components of the traditional college experience, expected by contemporary students.


To exceed these expectations by providing affordable, meaningful experiential and service-learning opportunities with the broader community as an extension of the classroom, in an environment of natural coastal beauty, will position the College as the preferred choice for student scholars across the state and region.



Shirley and Orion Douglass

*"We support the College of Coastal Georgia because its presence in our community speaks to our highest hopes and aspirations for Glynn County and our neighboring counties. The College offers our best and our brightest an option of remaining home rather than leaving to pursue a higher education. The College is the academic and cultural center of our region and it speaks loudly of what we value as citizens of Coastal Georgia."*

*The Honorable Orion L. Douglass  
Judge, State Court of Glynn County*



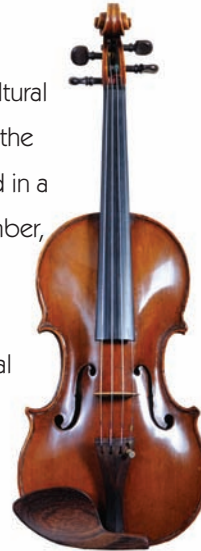
*"It is inspiring to witness the evolution of the College of Coastal Georgia as a positive and vital catalyst for the Brunswick-Golden Isles area. Not only is the College working to raise its academic excellence, it is also providing cultural enhancement venues, diverse programming, and vision for the students and the community. The College's endeavors favorably impact not only our quality of life, but indeed, our economic growth."*

*Maestro Luis Haza  
Music Director, Coastal Youth Symphony of Georgia  
Internationally-acclaimed violinist and conductor*

# Cultural and Arts Programming

## The Maestro

Over \$20,000 was raised to benefit cultural and performing arts programming at the College when Maestro Luis Haza performed in a stellar benefit concert on campus in December, accompanied by pianist Orlando Alonso. Maestro Haza recently moved to the area after retiring as first violinist with the National Symphony Orchestra and as music director of the American Youth Philharmonic Orchestras. 2010-2011 marks his first season as music director and conductor of the Coastal Youth Symphony, an affiliate of the Coastal Symphony of Georgia. Members of the local youth symphony were provided complimentary tickets to the concert by the Foundation.



## Southern Storytellers Series

The inaugural Southern Storytellers series featured syndicated columnist Dick Yarbrough in October and author Ronda Rich in November. An inspired idea by President Hepburn, the campus series was staged by the Advancement Office in collaboration with the Foundation's Special Events and Honors Committee. The objective of the Southern Storytellers series was to raise public awareness of the variety of cultural programming available on campus while financially benefitting the Foundation Annual Fund. College students attended the events for free.



2010 Compton Lecture Series speaker Dan Reeves signs a football for Coastal Georgia student Randall Rozier.

## Compton Lecture Series

The College of Coastal Georgia Foundation hosted the 13th Annual Compton Lecture in April 2010. Coach Dan Reeves, a Georgia native, former Dallas Cowboy and former NFL Head Coach, was the speaker. Proceeds from the lecture benefitted the students and programs of the College.

Prior to Coach Reeves' speech, the Foundation recognized seven Compton Scholars from area high schools. Compton Scholars who attend the College are awarded a \$1,500 scholarship by the Foundation to support their studies.

## Cultural, Arts and Lifelong Learning

The Foundation established an ad hoc committee, chaired by Trustee Anita Timmons, comprised of a cross section of civic, education, fine arts and cultural organization leaders in addition to Foundation trustees.

The Planning Committee is to serve as a catalyst and resource for community collaboration in conjunction with the proposed Coastal Community Center for the Arts. The purpose of such planning is to expand, cultivate and sustain quality arts, cultural enrichment, and personal development in the coastal Georgia region, as developed by community organizations and hosted on campus by the College. By year-end 2011 the Committee is expected to develop and recommend an initial programming plan.

*"2020 Vision, our strategic master plan, charges the College to partner with the city, the public school system, and local arts and cultural organizations to cultivate and expand the cultural offerings and encourage lifelong learning locally. The Coastal Community Center for the Arts is critical in this effort. Planning for programming options and alternatives is a key issue. Recognizing the importance of research, analysis and evaluation to inform the planning process, the Foundation established the Planning Committee for Cultural, Arts and Lifelong Learning Programs in 2010. Our role is to serve as advocate, catalyst, collaborator, and synthesizer of ideas."*

*Anita Timmons  
Foundation Trustee  
Chair, Planning Committee  
for Cultural, Arts and  
Lifelong Learning Programs*



*“Athletics round out the college experience that begins, of course, with academics. The College of Coastal Georgia is building its athletics programs as it builds an institution to serve a growing student population. We have to grow both to give students the experience they want and deserve.”*

*Reg Murphy  
Chair, College of Coastal Georgia  
Athletic Futures Committee and  
former President of the USGA*

*“Spirit finds its most enthusiastic expression in college athletics. It keeps us close to our alma mater for life.”*

*Jack Markley  
Retired Executive,  
Procter & Gamble*

*“Being a student-athlete at Coastal Georgia has been a life-changing opportunity to pursue an education that I never would have imagined. I appreciate the experiences in the classroom, on the basketball court, and, of course, at the beach.”*

*Jaren Harris  
Sophomore, Information Technology  
Tennille, Georgia*

## Athletic Programming

**C**ollege of Coastal Georgia athletics expanded in 2010, adding four varsity sports teams.

In February, Dr. William “Bee” Carlton joined the College as Athletic Director. Under the direction of Carlton, College President Dr. Valerie Hepburn, and Athletics Futures Chair Reg Murphy, the Athletic Department added men’s and women’s golf and men’s and women’s tennis.

To go along with its expanded mission, the department adopted a new athletic logo and new team colors, blue and grey.

In the fall, while tennis and golf began intercollegiate competition, the men’s basketball team kicked off its 29th campaign under Head Coach Gerald Cox, and women’s softball prepared for its fall season. The Athletic Futures Committee continued to meet and create a roadmap for continued success and expansion, including developing a pathway to competition as a four-year institution, exploring conference affiliation, and the addition of men’s and women’s cross country, women’s volleyball, and women’s basketball during the 2011-2012 academic year.



## Alumni Support

**T**he College has more than forty class years of students representing Brunswick Junior College, Brunswick College, Coastal Georgia Community College, and now the College of Coastal Georgia. Creating an active and engaged alumni base is essential for the continued growth and future success of the College. In

December 2010, the Alumni Advisory Committee was formed and charged with developing an alumni association to operate under the Foundation’s umbrella.

Comprised of leaders from a cross section of disciplines and interests, the Alumni Advisory Committee members will provide valuable perspectives, informing the College planning process, program development and resource acquisition. Members are active advocates for the College, communicating goals, achievements, aspirations, and opportunities to a range of external constituencies. Members share a common commitment – to improve the quality of the College of Coastal Georgia academic and service programs.

### Inaugural members of the Alumni Advisory Committee

Glenn Thomas Carson, '80, Chair

Carol Harris, '75

Jill Dukes '68

Creg Miller, '91

Floyd Phoenix, '73

Jessica Ramirez, '09

Mark Spaulding, '80

Dr. Morgan Stapleton, Former Vice President

Lillian Talbert, '67

Dr. John Teel, Former President

Gene Threats, '80

Mel Baxter, '71, Foundation Trustee Liaison



*“Most of us continued our higher education somewhere else. Our alumni loyalty tends toward the degree-issuing institution. But the transformation of the College of Coastal Georgia is really happening. Our ‘diamond in the rough’ is being polished by a master jeweler – Dr. Valerie Hepburn. Now is a prime opportunity to give back, to assure this new vision comes true. It’s good for our home town and it’s good for Georgia.”*

*Dr. Glenn Carson, '80  
Chair, College of Coastal Georgia Alumni Advisory Committee  
President, Disciples of Christ Historical Society*

## Faculty Development and Endowments

**F**oundation funding for faculty learning, research, scholarship and innovation enabled professors Jeff LeMieux, Dr. Kathleen Quinn, Dr. Ntungwa Maasha, Anna Dewart, and Dorothy Edwards to participate in conferences, meetings or workshops specific to their respective fields during 2010.

*"The Faculty Development funding I received from the College enabled me to attend a classical portraiture workshop in Toronto that has absolutely revolutionized the way I approach the Drawing I and II, Intro Painting, and Design courses. The experiences there validated much of what I already do, but also brought what had been a set of disparate abilities into more coherent focus. As a direct result, my personal artwork has taken a quantum leap and my classroom delivery has increased in depth and richness."*

Jeffrey A. LeMieux, M.F.A.  
Assistant Professor of Art



## On-campus student residential housing

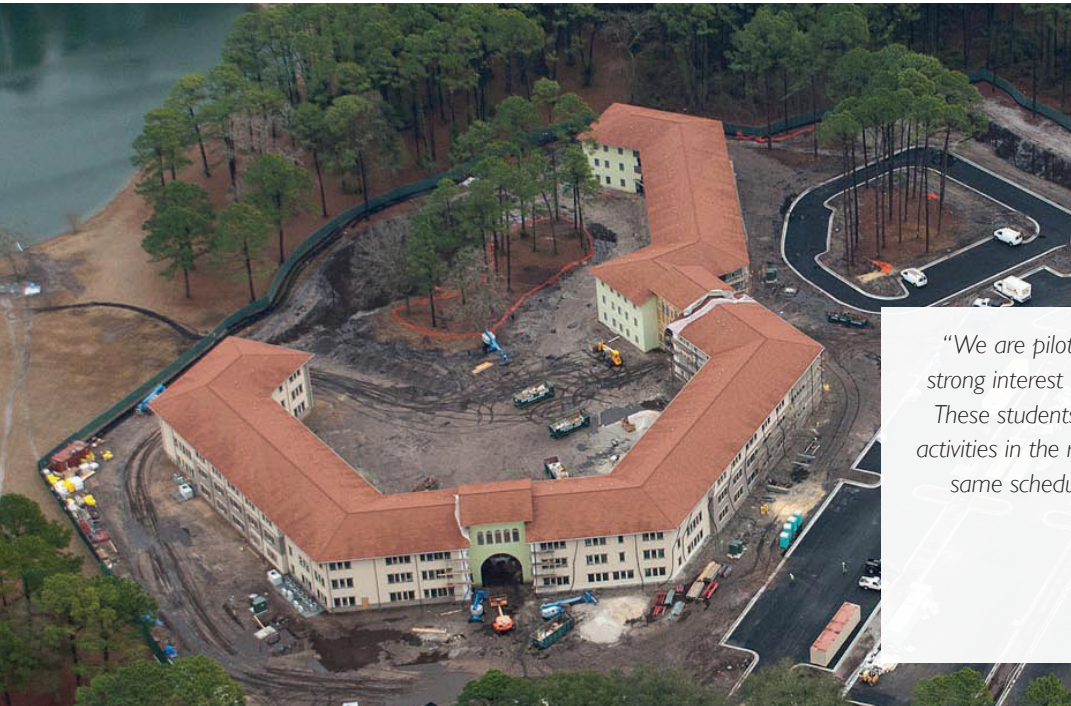
**Lakeside Village** moved from blueprints to construction during autumn 2010. By the beginning of fall term 2011, 350 beds in spacious combinations of two-bedroom semi-suites, two-bedroom suites and four-bedroom suites will be furnished and ready for student occupancy.

The residential experience is a key component of the traditional college experience. Lakeside Village is not a dormitory, but a residence hall – creating a vibrant community of engaged students connected to the campus, to student life, to both social and academic success, and to their environment. This is an intentional design for living, learning and sharing, not just a place to sleep at night.



*"We are piloting a Service-Learning Community, a cluster of students living together in the residence hall that have a strong interest in service-learning. Students will engage in ongoing service opportunities throughout the academic year. These students will participate in the College Success Seminar course together as well, which adds to the co-curricular activities in the residence hall. In addition, athletes will be able to live together, building a team dynamic. They share the same schedules and routines due to training. They'll be expected to demonstrate leadership as role models for other students. Such possibilities for bridge building and affiliation are exciting."*

Michael Butcher, Ph.D.  
Director, Residence Life and Housing



# 2010 Contributors

We thank our friends and contributors who are helping build the College of Coastal Georgia. We appreciate your past and future support.

## Visionaries - (\$100,000.00 +)

Hugh P. Nunnally, Jr.  
Southeast Georgia Health System

## Benefactors - (\$50,000.00 +)

Margaret Davis  
Mary and Jack A. Dinors  
St. Marys United Methodist Church Foundation

## Leaders - (\$10,000.00 +)

Elizabeth and Alfred Link through the  
Bergen County United Way  
Brunswick and Glynn County Development Authority  
Jan and John Campbell through Kids, Inc.  
Communities of Coastal Georgia Foundation  
Fourteen Black Men of Glynn, Inc.  
Georgia Power Foundation, Inc.  
The Virginia and Tom Gossage Foundation  
GP Cellulose, Inc.  
Julia Terrill Thomas Foundation  
The Azalea Foundation through The Community Fund  
in Jacksonville  
Jeanne and James Manning  
Rich Family Foundation  
Penny Szwast  
William T. Stembler through the Community  
Foundation for Greater Atlanta  
Susan Corn Wainright through the Communities of  
Coastal Georgia Foundation

## Patrons - (\$5,000.00 +)

Bank of America Foundation  
Laura and J. Greer Brown  
Brunswick-Glynn Co. MLS Inc.  
Dr. and Mrs. J. Melvin Deese  
Jill and J. Ashley Dukes  
The Eric & Julie Epstein Charitable Foundation  
Anne and Roy Hodnett  
Jennifer and Buff Leavy  
Diana and Reg Murphy  
University System of Georgia Foundation

## Sustainers - (\$2,500.00 +)

Stephen M. Bodolay  
BPOE Elks Lodge No. 691  
Coastal Bank of Georgia  
Pat Hodnett Cooper  
Ada Lee and Pete Correll through the  
Correll Family Foundation  
Darien Telephone Company  
Goodwill Home, Inc.  
Lucia and Mike Gumaer

Donna and Wayne Johnson  
King & Prince Seafood Corporation  
Georgia Ann and Jack Markley  
Navy League of the United States Golden Isles Council  
Karen and Brian Parks  
SunTrust Foundation  
Validis Resources

## Supporters - (\$1,000.00 +)

AT&T Georgia  
Marcia and Levi Baisden  
Dr. Fred and Alice Barlow  
BB&T  
Ann and David Bluestein  
Don E. Carter  
Certified Electric, Inc.  
Chaine des Rotisseurs, Bailliage des Golden Isles of Georgia  
City Drug Store  
Confrerie de la Chaine des Rotisseurs Foundation  
Mike Cook  
Kim and Carl Coolidge  
Vicki and Fred Coolidge  
LaVerne Cooper  
Gerri Culbreath  
Emily and Lee Davenport  
JoAnn and Ted Davis  
Pam and Bruce Dixon  
Marie W. Dodd  
Emerald Princess II Casino  
Episcopal Church Women  
Vonny and Ken Farrell  
First Coast Benefits Solutions, Inc  
Dr. Craig Fleisher  
Georgia Crown Distributing Company  
Gilbert, Harrell, Sumerford & Martin, P.C.  
Bill Gross  
Kay S. Hampton  
Carol and Duane Harris  
Leslie and Ben Hartman  
Dr. Valerie A. Hepburn and David Hayes  
Dana and Mike Hodges  
Zoe W. Horton  
Wanda A. Hunter  
Hunter, Maclean, Exley & Dunn, P.C.  
Hurt, Norton & Associates  
Betty M. Jones  
Dr. Gerald Kiel  
Brenda and Jack Kilgore  
King and Prince Beach & Golf Resort  
Cheri and Vance Leavy  
Regent Donald M. Leebern  
Rebecca and Charles Lott  
Laura F. Maguire  
Michael Maloy  
Janie Marquess  
Dr. Phillip Mason

Ron and Rosemary Maulden  
Genie McGarvey  
Laura and Lewis McKinley  
Pam and Al McKinnon  
Jean and Fred Mistretta  
Moore Stephens Tiller LLC  
Susan and Don Myers  
Nalley Brunswick Automobiles, Inc.  
Dana and Patrick Parker  
Connie and John Patrick  
Pilot Club of Brunswick  
Nancy and Arthur Pittman  
PrimeSouth Bank  
Rich Products Corporation  
Rock Solid Holdings, LLC  
Diane and Woodrow Sapp  
Dr. and Mrs. Thomas Sayer  
Susan Shipman and Mark Jicha  
Sylvia and Ben Slade  
Barbara and David Smith  
Tricia and Charlie Smith  
Willou and Bill Smith  
A. W. Strickland  
Brooke and Rees Sumerford  
George P. Swift  
Jane and Bill Thau  
The Broadfield Foundation  
The Brunswick News  
The Darien News  
Anita and James Timmons  
Merry and Bill Tipton  
Marta and Bill Torrey, Jr.  
Lance Turpin  
United Way of Northeast Florida  
Lois Vieser  
Elizabeth Weatherly  
Keith and Barbara Weikel through the National  
Philanthropic Trust  
Woman's Club of Brunswick  
Dick Yarbrough  
Susan and David Zimmerman

## Partners - (\$500.00 +)

Mary and Ray Acosta  
Dr. Hugh Armstrong  
Lee and Mel Baxter  
Regent James A. and Mary Bishop  
Meyer Bluestein  
Judy and Claude Booker, Jr.  
Mary and R. Neal Boswell  
Brunswick Glynn County Bar Association  
Sandra J. Bunn  
Dr. William Bee Carlton  
Glenn Thomas Carson  
Dr. Marsha Certain

Dr. Ann R. Crowther  
Lonita and Corbin Davis  
Judge Orion and Shirley Douglass  
Beth and William Downey  
Martha and Lamar Ellis  
Karen and Bradley Endicott  
Fisher and Phillips, LLP  
Georgia Power Company  
Georgia Theatre Company  
Susan and Bill Gussman  
John A. Gyllin  
H & H Lifestyles  
Sandra and Jerry Harper  
Maestro Luis and Dana Haza  
Julia and Earl Horton  
Dr. Timothy and Michele Jamieson  
Jeanne Marie and James Kiss  
Dr. Kent Layton  
Ben Lee  
John L. Ludwig  
Thomas Malone  
Lois and Thomas Marchetto  
Erma and William Portman  
Brenda and Kevin Runner  
Pat and Tony Sammons  
Schell & Hogan CPAs  
South Coast Bank & Trust  
Southeast Georgia Radiology, P.C.  
Catherine and Stephen Squire  
Libby and Ward Sweat  
William Tinkler, Jr.  
United Community Bank  
United States District Court, Middle District of Florida  
Vista Outdoor Advertising  
Janice and Sidney Walker  
Laura and John Wallace  
Barbara and John Whilsher, Jr.  
Muriel and John Windolf

## Mates - (\$250.00 +)

Elaine and Dean Auten  
Carole and John Barton  
Alison and Larry Bouts  
Julie Carnes  
Greg Carver  
Lamar Davis  
Dr. George Dupuy  
Dr. and Mrs. Ian Easton  
Sara and Luther Fennell  
Jean Fleming  
Phoebe and Thomas Flickinger  
Fulcher Hagler LLP

## 2010 Contributors

J. Robert Gaither  
Georgia Ports Authority (Savannah)  
Harold E. Hicks  
Debbie and Con Holland  
Interdenominational Sunday School Council  
Jotham Johnson  
Colonel and Mrs. Ulrich Keller  
Tara and Stephen Kinney  
Andrew H. Lakin  
Janice and Lawrence Lamattina  
Gail and Scott Ledbetter  
The Honorable William T. Ligon  
Jackie Lyons  
Howard Mann  
Frances and Dennie McCrary  
McCrary Family Fund  
Arlene C. Norris  
Nancy and Cato Rogers  
Sea Georgia Adventures  
Sea Island Ladies Golf Association  
Martha K. Shelhoss  
Bonney and Billy Shuman  
Southeastern Bank  
Rita C. Spalding and Jeffrey J. Buerstatte  
Dr. and Mrs. Morgan Stapleton  
Deanie and Joseph Strength  
Sweat's Furniture, Inc.  
Philip Taylor  
Dr. and Mrs. John Teel  
The Honorable Tony Thaw  
The Farrell Fund  
The Links Incorporated Brunswick Chapter  
Anne and John Tuten

Tricia and Mike Boatright  
Jo Ann and Richard Bobb  
Sharon Bolin  
Edward E. Boshears  
Madeline M. Bowen  
Dena Boyd  
Virginia Boyd  
Marie O. Brewer  
Jennifer and Bob Broadus  
Elizabeth Brockwell  
Marie Brogsdale  
Evella and Carl Brown  
Heather A. Brown  
Riley L. Brown  
William H. Brown  
Deborah Browning  
Lester W. Bruce  
Virginia and Joe Bucciaglia  
Linda Bullock  
John R. Burton  
Cal Duke Publishing, Inc.  
Melissa Canady  
Suzanne and Chuck Cansler  
Mary B. Cashin  
Lee and Austin Catts  
Sue Chambliss  
Dr. Patricia Chiarelli  
Martha and Sam Choate  
Holly A. Christensen  
City of Woodbine  
Commissioner Jerome and Everlina Clark  
Climate Controllers  
Coastal CPAs LLC  
Coastal Regional Commission  
Coastal Symphony of Georgia Society  
Marsha Collins  
Leanne Cornell  
Dr. Robert J. Cornell  
Marian Cotney  
Gail Cowan  
Gerald F. Cox  
William W. Crosby  
Dr. Catherine Culver  
Sally and Robert Cunningham  
Dabbs, Hickman, Hill & Cannon, LLP  
Jennifer Daniel  
Sara Davis  
Patricia and Grayson Day  
Meredith and Charles Deal  
Nancy and James DeLong  
Ann and Ron Dempsey  
Diane L. Denton  
Barbara and Frederick Deratto  
Keri and Brian Dolan  
Charlotte Doster

Carmen Eggers  
Ellis & Associates, Inc.  
David Everett  
Express Employment Professionals  
Robin Flores  
Focus Ministries, Inc.  
Barbara L. Ford  
Lynn and Wally Forsythe  
Lillie Frazier  
Elizabeth T. Freyer  
Colonel Thomas Fuller  
David Gardner  
Joanna Gentile  
Dr. Craig Gertzle  
Georgia Coastal Federal Credit Union  
Dawana Gibbs  
Patricia and Billy Gibson  
Judith A. Gift  
Harriet B. Gilbert  
Rose Ann and John Giles  
Viola Gipson  
Shelia Glaeser  
Glynn Urologists, P.C.  
Dr. Pat and Donna Godbey  
Hilda Golden  
Peggy Golden  
Robert Gonzalez  
Wistar E. Goodhue  
Robert E. Griffin  
Myrna A. Gurty  
Mary Jane and Norman Haft  
Taylor and Reese Haley  
Alice and Royce Hall  
Rhonda and Harlan Hambright  
Dr. M. Karen Hambright  
Robert Hamge  
Nancy and John Hamilton  
James O. Hannaford  
Karen Hanson  
Deborah and Andrew Harris  
Roosevelt and Margie Harris  
Bud Hearn  
Jane and Kevin Heeney  
Michael Hendley  
Kenneth M. Henson  
Ashley Higson  
Sandra Hochwald  
Susan and Dan Hogan  
Debra Holmes  
Venus Holmes  
Elizabeth and Gerald Homans  
Stephanie and Jones Hooks  
Lorette M. Hoover  
Grace Hopper  
Robert Hudley

Dr. Clayton Hurd  
Industrial Insulation Group  
Jane and Russell Jacobs  
Vicky Jefferis  
Pamela R. Johndroe  
Edna H. Johnson  
Hazel J. Johnson  
La Vertia K. Johnson-Ekrok  
Dr. Mitchell and Sherri Jones  
Pat and John Kaufman  
Keith Kicklighter Insurance Company  
Lynda Kennedy  
King & Prince Golf Course  
Rebecca King  
Dr. Tina and Mr. William C. Kirby  
Ronda Knight  
Lamar T. Webb Architect, Inc.  
Lamkin Public Relations  
Marjorie T. Langford  
Jerry and Beverly Latvala  
William C. Lawrence  
Andrew and Judith Ledford  
Susan and Sam Lee  
Kimberly R. Leggett  
Bryan Lemons  
Steve Leslie  
Clyde LeTarte  
David Lewis  
Liberty Roll-Offs & Recycling  
Susan and Blake Liphtratt  
Terri Lorenz  
Juanita Lott  
Susan Lunsford  
Drs. Jim and Claire Hughes Lynch  
Dr. Ntungwa Maasha  
Nancy and Harold MacKenzie  
Lee and Mike Malone  
Katharine H. Mann  
Dr. Hubert and Gail Manning  
Marshland Credit Union  
Terri and Greg Martin  
Karen Martin  
M. Jeffery Martin  
Cathy Massey  
Master Lube, Inc.  
Dr. Don Mathews  
Johnny Mathis  
Gretchen E. Mauney  
Robert and Cynthia May  
Jeanne and John McConnell  
Rudine and Dorman McDonald  
Thomas McMillan  
Sheila and Arlie McNeill  
L.H. Michaels  
Jackie and David Mobley

Jane A. Montgomery  
Gerald Moody  
Thomas Morgan  
Kathleen Morris  
Diane and William Mueller  
Nancy and Micheal Muldowney  
Mullet Bay, Inc.  
Marilyn N. Nelson  
Melissa and Marc Neu  
Fred L. Newton  
Joan Nichols  
Dr. and Mrs. William Nicholson  
Ocean Transport  
Faye Ogden  
Okfeenokee Rural Electric Membership Corporation  
Gloria and Olaf H. Olsen, Jr.  
On the Green Salon & Day Spa  
John J. Ossick  
James A. Otte  
Phillip E. Overton  
Mary and John Pafford  
David Palmer  
Callie Peebles  
Dr. Diane Pennington  
Maira E. Perdomo  
Walter B. Peterson  
Floyd Phoenix  
Angela and Daren Pietsch  
Annie C. Polite  
Janet Ponsell  
John P. Pope  
Angel and Jim Porch  
Paula M. Porter  
Nadine V. Powell  
Bonnie Rabert  
The Honorable David Rainer  
Barbara and Vernon Reed  
Diane Richardson  
Sara and Charlie Rinkevich  
Bobby Rogers  
Freda Roulhac  
Stacy Rowe  
Randall Rozier  
Patricia Rugaber  
Elinor and Jim Russell  
Kathleen W. Russell  
Carol and Lowell Russell  
Susie and Richard Salvatore  
C. Tom Saunders  
Pegge M. Sheffield  
Albert Shelander  
Connie C. Shelnutt  
Walter Shipman  
Signature Properties Group, Inc.  
Charles D. Sikes

Sandra Simmons  
Richard H. Sinkfield  
Bryan Sipe  
Clyde C. Smith  
Donna M. Smith  
Jonathan R. Smith  
James S. Snow  
Linda Souter  
Southeastern OB-GYN, P.C.  
Leslie A. Spires  
Virginia Stanfield  
Ann and William J. Stembler  
Charles S. Sterner  
Ashley V. Stewart  
Marie Stoner  
Jennifer and Trevor Stratton  
Clyde Strickland  
Hillary Stringfellow  
Claryce S. Strother  
Barbara and Jack Sullivan  
Mary O. Sweat  
Jeannette F. Swent  
Beverly Talbert  
Target  
Jacquelyn R. Taylor  
Mary Teston  
Weldon Thalacker  
The Sharp Foundation  
The Benefield Foundation, Inc.  
The Light Vending Company  
Thomas & Hutton Engineering Co.  
James E. Thompson  
K.C. Thorton  
Drs. Sindhu and Hamsa Thota  
Ronald Tobias  
Joyce and Darryl Toler  
Sam Tostenson  
Anita Ulery  
United States Court of Appeals  
United States District Court, Southern District of Georgia  
Ronald Upshaw  
Cheryl M. Van Dyke  
Village Inn & Pub  
Deborah Votel  
Angie Votsis  
William Q. Walker  
Dr. Andrea Wallace  
Michael G. Warren  
Irene Way  
Rosa G. Waye  
Jacqueline J. Weder  
Marcia and Michael Wendel  
Jerry White  
Carolyn E. Whitfield  
Mildred Huie Wilcox

The Honorable and Mrs. Joe Wilkinson  
William C. Smith & Associates  
Willie's Wee-Nee Wagon  
Ann and Joel Willis  
Royce Wood  
Katherine and Martin Worthy  
Walter Wright  
Jean W. Wynn  
Debbie Yancey  
Flora M. Youmans  
Emory C. Young  
Betty Zeigler  
Zion Baptist Church

## In Honor of

In Honor of Gail Cowan  
*Judith A. Gift*  
In Honor of Roy Hodnett  
*Dick Yarbrough*  
In Honor of Camden Hogue  
*Nell Austin*  
In Honor of the St. Simons Island Rotary Club  
*Walter Forsythe*  
In Honor of students earning educational degrees  
*Flora M. Youmans*  
In Honor of Mr. William F. Torrey, Jr.  
*Jotham Johnson*  
In Honor of Geri Cullbreath  
*Dr. Valerie A. Hepburn*  
In Honor of John Gyllin  
*Dr. Valerie A. Hepburn*  
In Honor of Elizabeth Weatherly  
*Dr. Valerie A. Hepburn*

## In Memory of

In Memory of Judge Anthony A. Alaimo  
*Madeline M. Bowen*  
*Austin E. Catts*  
*Brunswick Glynn County Bar Association*  
*City of Woodbine*  
*Coastal Regional Commission*  
*Corbin J. Davis*  
*Lamar Davis*  
*Fisher & Phillips, LLC*  
*Fulcher Hagler LLP*  
*Wistar E. Goodhue*  
*Hazel J. Johnson*  
*Donald M. Leebern*  
*The Honorable William T. Ligon*  
*Thomas Malone*

*John J. Ossick*  
*Charles D. Sikes*  
*Richard H. Sinkfield*  
*Clyde C. Smith*  
*The Benefield Foundation*  
*The Brunswick News*  
*The Sharp Foundation*  
*Southeast Georgia Health System*  
*William Tinkler, Jr.*  
*United States Court of Appeals*  
*United States District Court, Middle District of Florida*  
*United States District Court, Southern District of Georgia*

In Memory of Robert B. & Annabell D. Atwood  
*Wanda Hunter*

In Memory of Judith A. Bodolay  
*Stephen M. Bodolay*  
*Marilyn N. Nelson*  
*Jeannette F. Swent*

In Memory of Helen Bloodworth  
*Sara Davis*

In Memory of Maria A. Cappello  
*Virginia Bucciaaglia*

In Memory of Florence Damario Cornell  
*Dr. Robert J. Cornell*

In Memory of Virginia Hicks  
*Dr. and Mrs. D. Hubert Manning*  
*Kathleen Williamson Russell*  
*Marie W. Dodd*  
*John R. Burton*

In Memory of Dick & Bessie Jackson  
*Darien Telephone Company*

In Memory of Evelyn Shupe Johnson  
*Jacquelyn R. Taylor*

In Memory of Sally Manning  
*Dr. Diane Pennington*

In Memory of Murray McGarvey  
*Genie McGarvey*

In Memory of Tilden L. Norris  
*Arlene C. Norris*

In Memory of Walter T. O'Brien  
*Marie O. Brewer*

In Memory of Roy Luther Smith  
*H&H Lifestyles*

In Memory of Joseph L. Stanfield  
*Virginia Stanfield*

# 2010 Fiscal Report

## Annual Fiscal Report

<b>Balance December 31, 2009 (Audited)</b> .....	<b>\$8,451,481</b>
Cash Contributions.....	\$1,450,237*
Net Increase in Pledges .....	\$336,525
Earnings/Losses .....	\$681,701
<i>*Includes fulfillment of prior year pledge obligations</i>	

### Program Disbursements

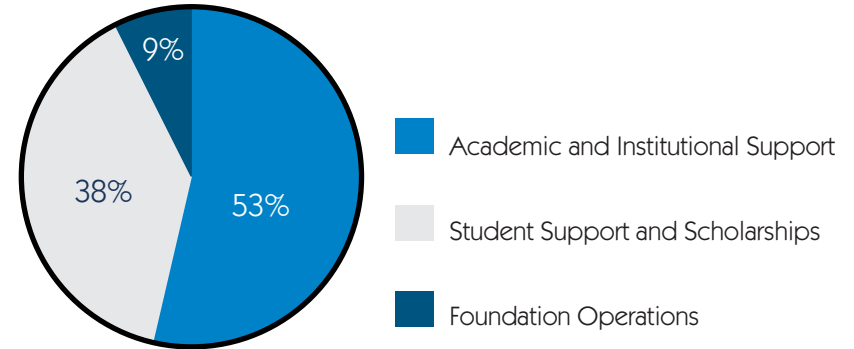
Academic and Institutional Support.....	\$272,071
Student Support and Scholarships .....	\$198,471
Foundation Operations .....	\$48,010
<b>Total</b> .....	<b>\$518,552</b>
<b>Balance December 31, 2010</b> .....	<b>\$10,401,392</b>

### Breakdown of Fund Balance

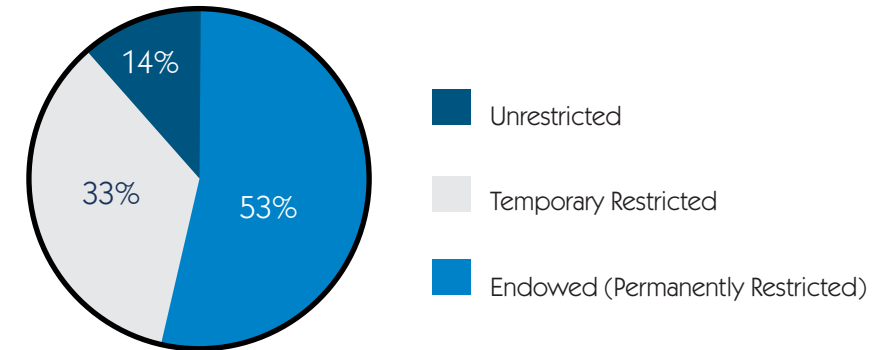
Unrestricted .....	\$1,468,138
Temporarily Restricted .....	\$3,439,696
Endowed (Permanently Restricted) .....	\$5,493,558
<b>Total</b> .....	<b>\$10,401,392</b>

*Unrestricted:* Funds for programs expenses having no restrictions. *Temporarily Restricted:* Funds for program expenses restricted to a specific purpose by the donor. *Endowed (Permanently Restricted):* Funds to be held in perpetuity to generate earnings for program expenses.

Program Disbursements



Breakdown of Fund Balance







Main Campus • 3700 Altama Avenue • Brunswick, Georgia 31520 • 912.279.5925  
Camden Center • 8001 Lakes Boulevard • Kingsland, Georgia 31548 • 912.510.3300  
[www.ccgaf.edu](http://www.ccgaf.edu)